



## Linear Action Press Welders: 80, 100, 150, 200, 250, 300 KVA

### Standard Features:

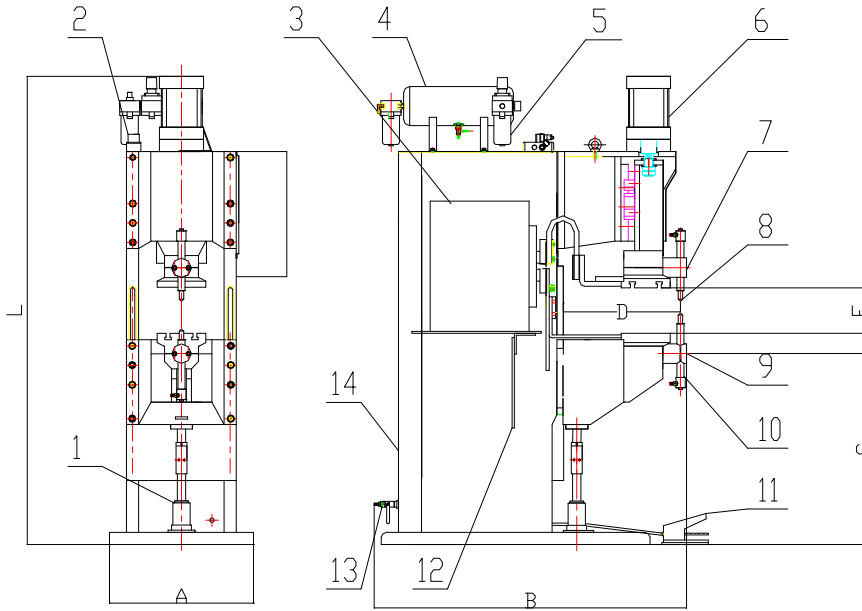
- \* Heavy Duty Steel Frame
- \* Dual THK Linear Bearings
- \* Water Cooled Transformer
- \* Water Cooled SCR
- \* Water Cooled Electrodes and Electrode Holders
- \* Adjustable Lower Knee with hydraulic jack
- \* Switch between Projection welding and spot welding with minimum changeover time
- \* Low Friction air cylinders
- \* 3" ram stroke, air pressure regulator gauge and air exhaust muffler



Item	Model					
	80	100	150	200	250	300
Rated Power @ 50% KVA	80	100	150	200	250	300
Rated Primary Power (V)	440/550	440/550	440/550	440/550	440/550	440/550
Secondary Voltage (V)	6.6~8.2	7.3~9.1	9.5~11.8	10.5~13.5	11.8~14.6	13.5~15.8
Rated Frequency (Hz)	60	60	60	60	60	60
Max. Short Circuit Current (A)	27200	41000	52000	65000	76000	88000
Max Weld Power (KVA)	160	280	330	410	500	600
Arm Extend Dimensions (in.)	20.5	20.5	20.5	20.5	20.5	20.5
Weld Force (lbs)	1655	2711	2711	4047	4047	4047

Item	Transformer Specifications				
	Model				
	80	100	150	200	250
Power Supply	440/550	440/550	440/550	440/550	440/550
Frequency (Hz)	60	60	60	60	60
Phase	1	1	1	1	1
Duty (%)	50	50	50	50	50
Secondary Voltage (V)	6.6~8.2	7.3~9.1	9.5~11.8	10.5~13.5	11.8~14.6
Cooling Water Flux (GPM)	2.5	2.5	3.75	3.75	4
Length (in)	16 1/8	18 1/8	18 7/8	19 5/8	20 7/8
Width (in)	11 1/4	11 1/4	13 3/8	13 3/4	13 3/4
Height (in)	16 7/8	16 7/8	21 5/8	21	21

## ZDN 80, 100, 150, 200, 250, 300



1. Jack
2. Solenoid Valve
3. Weld Transformer
4. Compressed Air Tank
5. Lubricator/Filter
6. Weld Cylinder
7. Uper Electrode
8. Electrode Head
9. Low Arm
10. Electrode Holder
11. Foot Swith
12. High Voltage Electronic Board
13. Cooling Water in and out
14. Welder Body

	L	A	B	C	D	E
ZDN-80. 100TQ	76"	23"	50"	31"	19"	7"~15"
ZDN-150. 200TQ	76"	25"	50"	31"	19"	7"~15"